

CITY OF MURRAY CONTROL MONUMENT CARD

DESIGNATION: BM D7 A

TYPE: CONCRETE MONUMENT W/ CITY DISK

DATE SET: JUNE 2002 QUAD: MURRAY, KY.

HORIZONTAL DATUM: NAD-83 VERTICAL DATUM: NAVD-88

STATE: KENTUCKY COUNTY: CALLOWAY ZONE: KY. S 1602

NORTHING: 1747832.13 FT

EASTING: 887492.19 FT

ELEVATION: 535.96 FT (GPS)

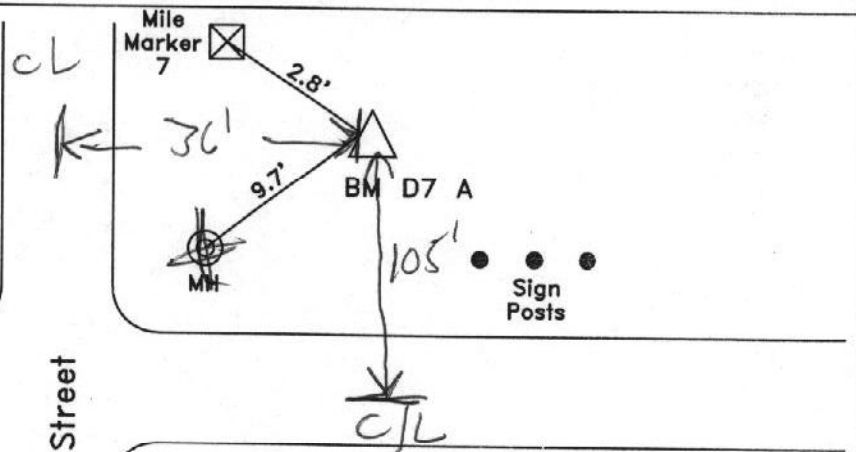
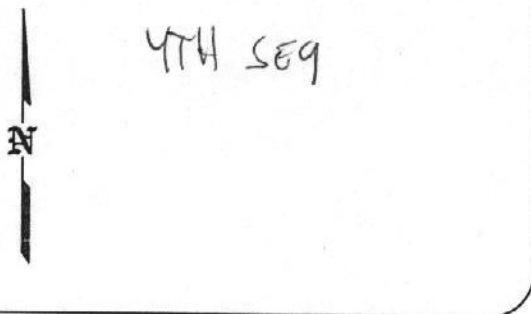
LATITUDE: N 36°36'01.02132" LONGITUDE: W 088°18'54.37818"

SCALE:

CONVERGENCE:

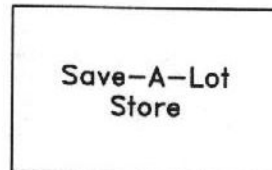
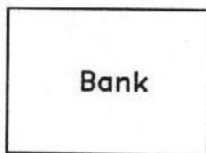
PLANE AZI. TO AZI. MARK:

To Reach: Located at the intersection of South 12th St. and Story Street.



Story Street

South 12th Street



NOT TO SCALE



GRW Aerial Surveys, Inc.
801 Corporate Dr. Lexington Ky. 40503
(859)223-3999